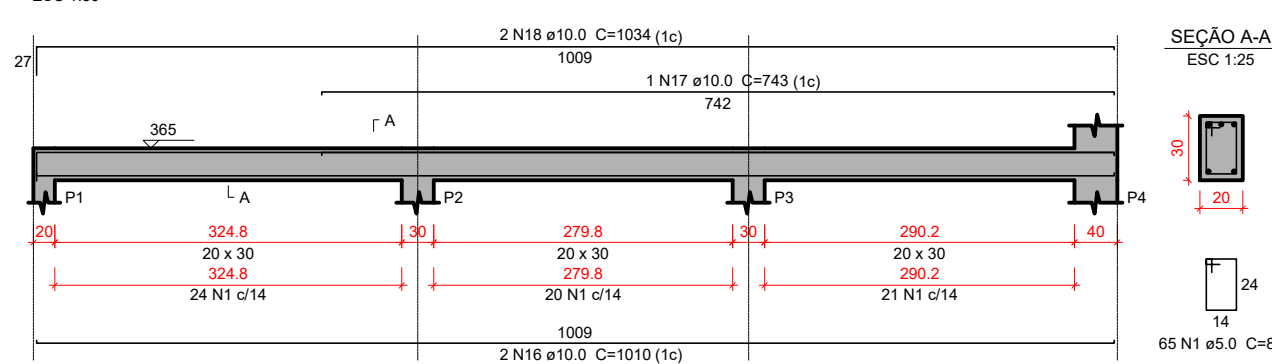
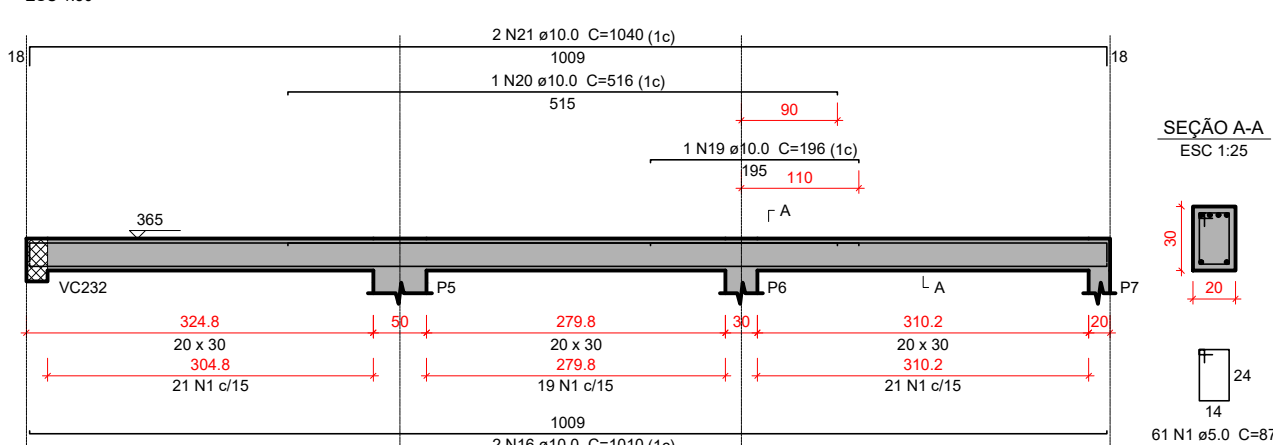


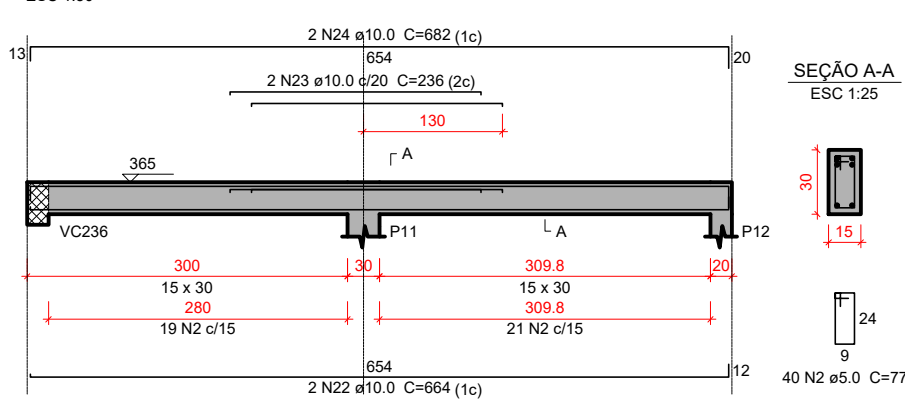
VC201



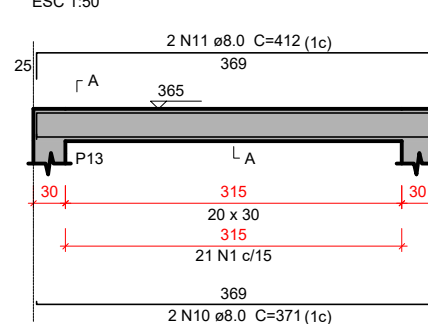
VC202



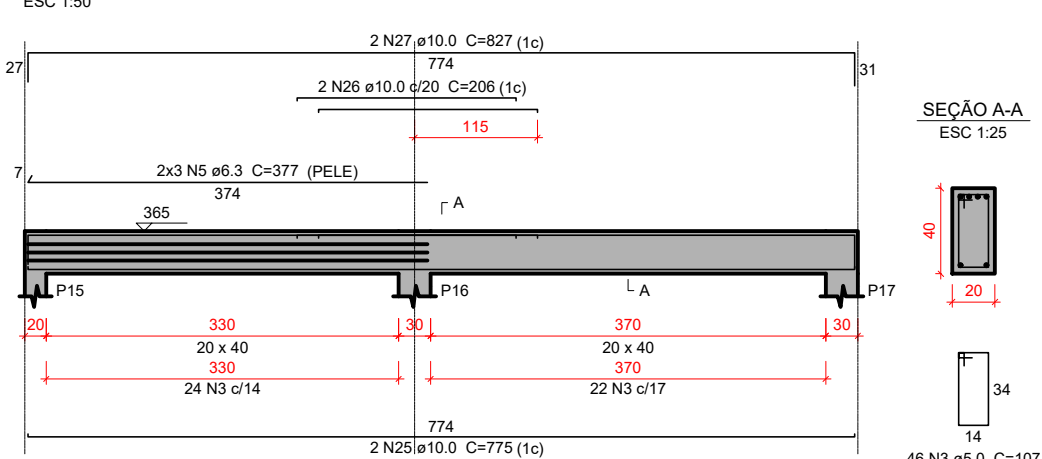
VC203



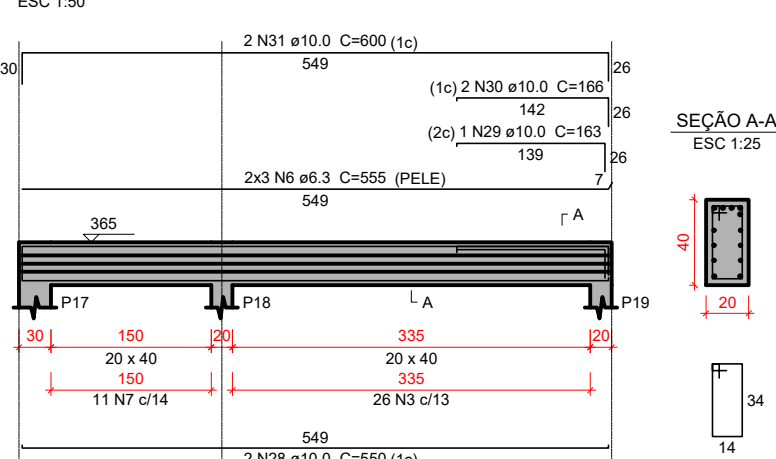
VC204



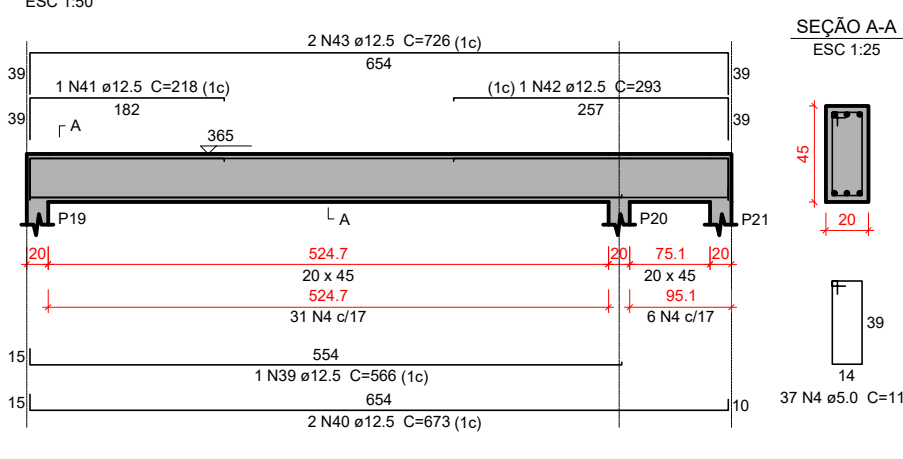
VC205



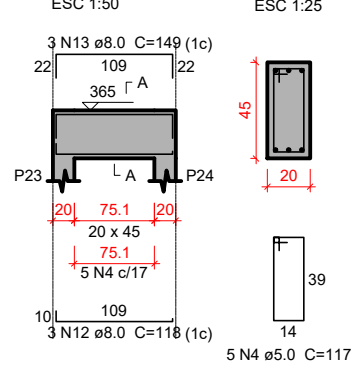
VC206



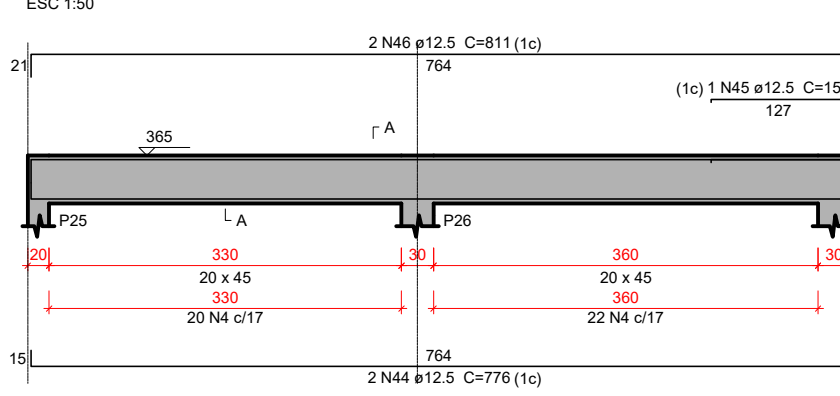
VC207



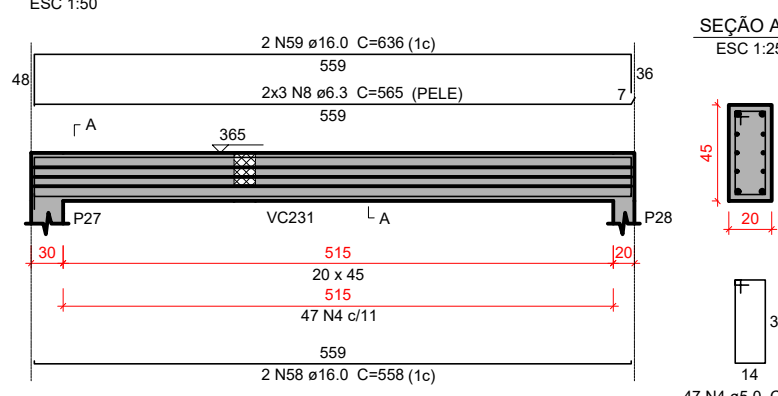
VC208



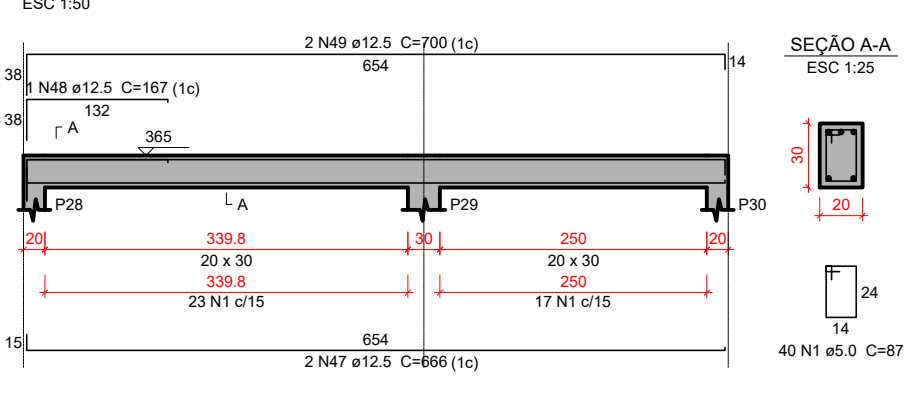
VC209



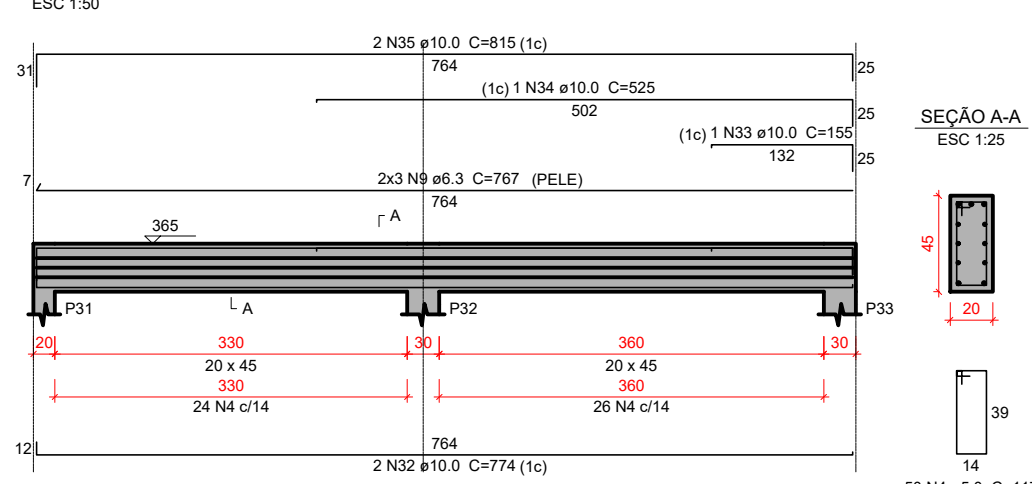
VC210



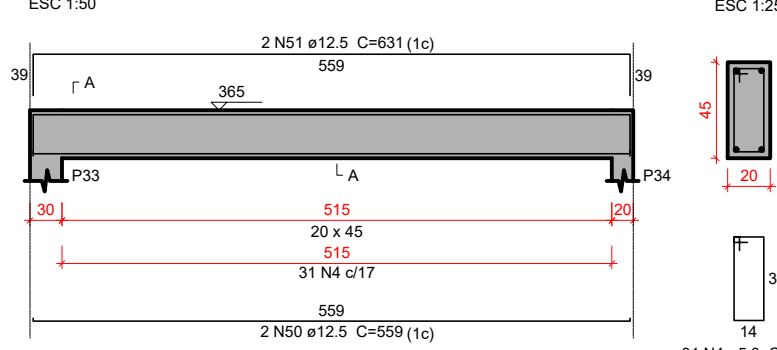
VC211



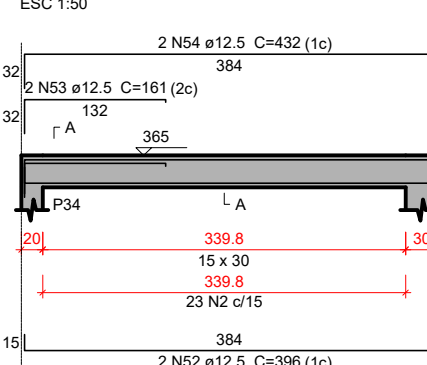
VC212



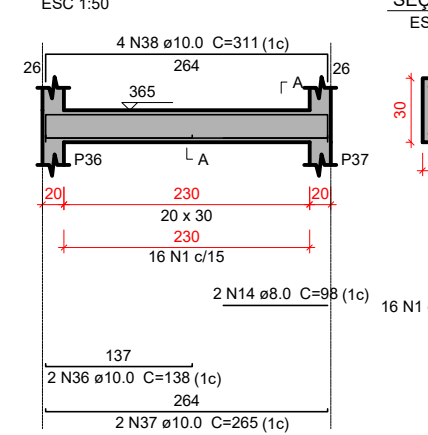
VC213



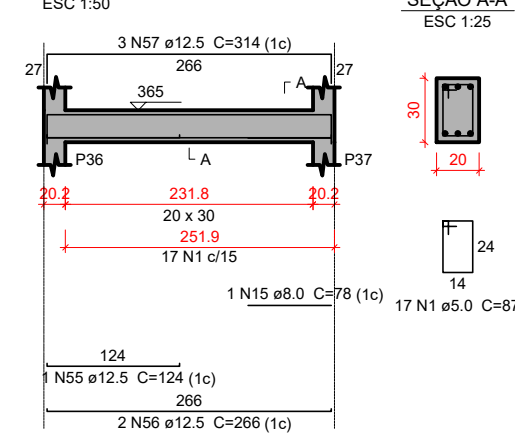
VC214



VC215



VC216



Relação do aço

VC201	VC202	VC203			
VC204	VC205	VC206			
VC207	VC208	VC209			
VC210	VC211	VC212			
VC213	VC214	VC215			
VC216					
AÇO	N	DIAM (mm)	QUANT	C UNIT (cm)	C TOTAL (cm)
CA60	1	5.0	220	87	19140
	2	5.0	63	77	4851
CA50	3	5.0	170	107	18190
	4	5.0	212	117	24804
	5	6.3	6	377	2262
	6	6.3	6	385	2310
	7	6.3	11	108	1188
	8	6.3	11	108	1188
	9	6.3	6	377	2262
	10	6.3	7	377	2646
	11	12.0	8	417	3336
	12	12.0	8	417	3336
	13	12.0	8	417	3336
	14	18.0	2	198	396
	15	18.0	2	198	396
	16	10.0	4	1010	4040
	17	10.0	1	743	743
	18	2.0	1034	2068	21338
	19	10.0	1	1940	1940
	20	10.0	1	1010	1010
	21	11.0	1	1064	1064
	22	22.0	1	1930	1930
	23	22.0	1	236	236
	24	22.0	2	882	1764
	25	27.5	1	1550	1550
	26	28.0	10	250	2500
	27	32.0	1	1654	1654
	28	32.0	1	163	163
	29	32.0	1	166	166
	30	32.0	1	332	332
	31	31.0	10	600	6000
	32	31.0	1	774	774
	33	30.0	1	125	125
	34	30.0	1	525	525
	35	30.0	10	815	8150
	36	36.0	10	338	3380
	37	36.0	1	530	530
	38	36.0	1	131	131
	39	36.0	1	131	131
	40	42.5	1	218	218
	41	42.5	1	218	218
	42	42.5	1	233	233
	43	42.5	1	726	1452
	44	42.5	1	1552	1552
	45	12.5	1	117	117
	46	12.5	1	161	162
	47	12.5	1	166	166
	48	12.5	1	166	166
	49	12.5	1	166	166
	50	12.5	1	166	166
	51	12.5	2	631	1261
	52	12.5	2	631	1261
	53	12.5	2	631	1261
	54	12.5	2	631	1261
	55	12.5	1	124	124
	56	12.5	1	286	572
	57	12.5	1	342	342
	58	18.0	2	298	596
	59	18.0	2	298	596
	60	18.0	2	298	596
	61	18.0	2	298	596
	62	18.0	2	298	596
	63	18.0	2	298	596
	64	18.0	2	298	596
	65	18.0	2	298	596
	66	18.0	2	298	596
	67	18.0	2	298	596
	68	18.0	2	298	596
	69	18.0	2	298	596
	70	18.0	2	298	596
	71	18.0	2	298	596
	72	18.0	2	298	596
	73	18.0	2	298	596
	74	18.0	2	298	596
	75	18.0	2	298	596
	76	18.0	2	298	596
	77	18.0	2	298	596
	78	18.0	2	298	596
	79	18.0	2	298	596
	80	18.0	2	298	596
	81	18.0	2	298	596
	82	18.0	2	298	596
	83	18.0	2	298	596
	84	18.0	2	298	596
	85	18.0	2	298	596
	86	18.0	2	298	596
	87	18.0	2	298	596
	88	18.0	2	298	596
	89	18.0	2	298	596
	90	18.0	2	298	596
	91	18.0	2	298	596
	92	18.0	2	298	596
	93	18.0	2	298	596
	94	18.0	2	298	596
	95	18.0	2	298	596
	96	18.0	2	298	596
	97	18.0	2	298	596
	98	18.0	2	298	596
	99	18.0	2	298	596
	100	18.0	2	298	596